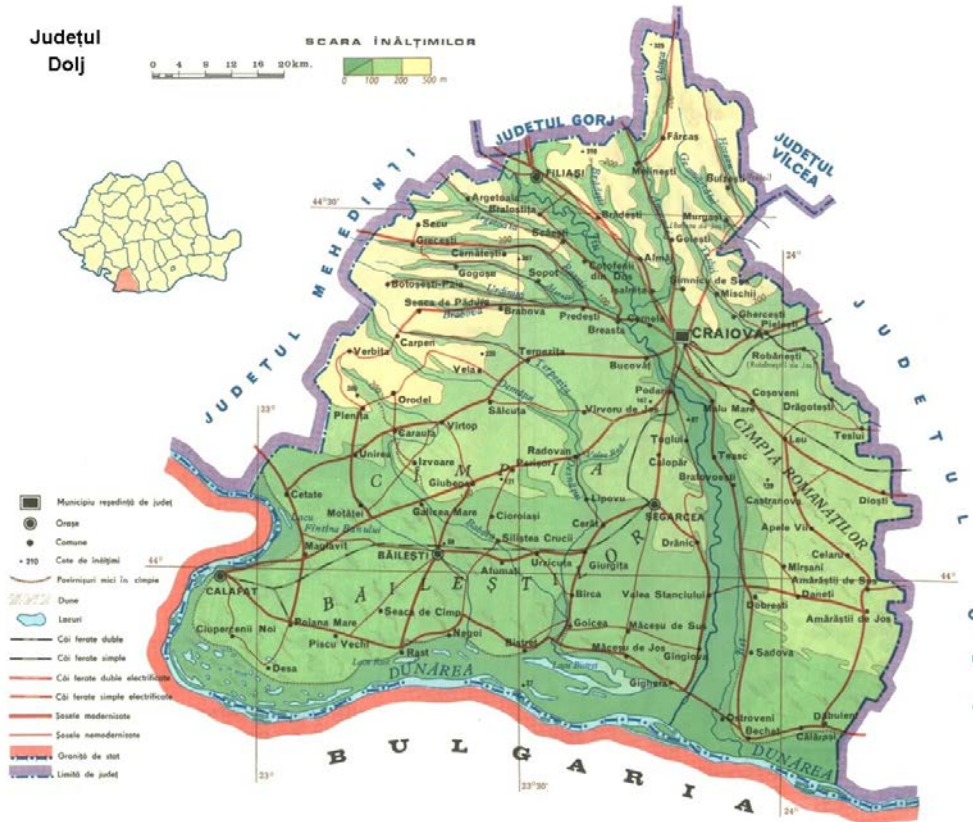


DOING business in CRAIOVA



**SMART
INVESTORS NEED
SMART
ADMINISTRATION**

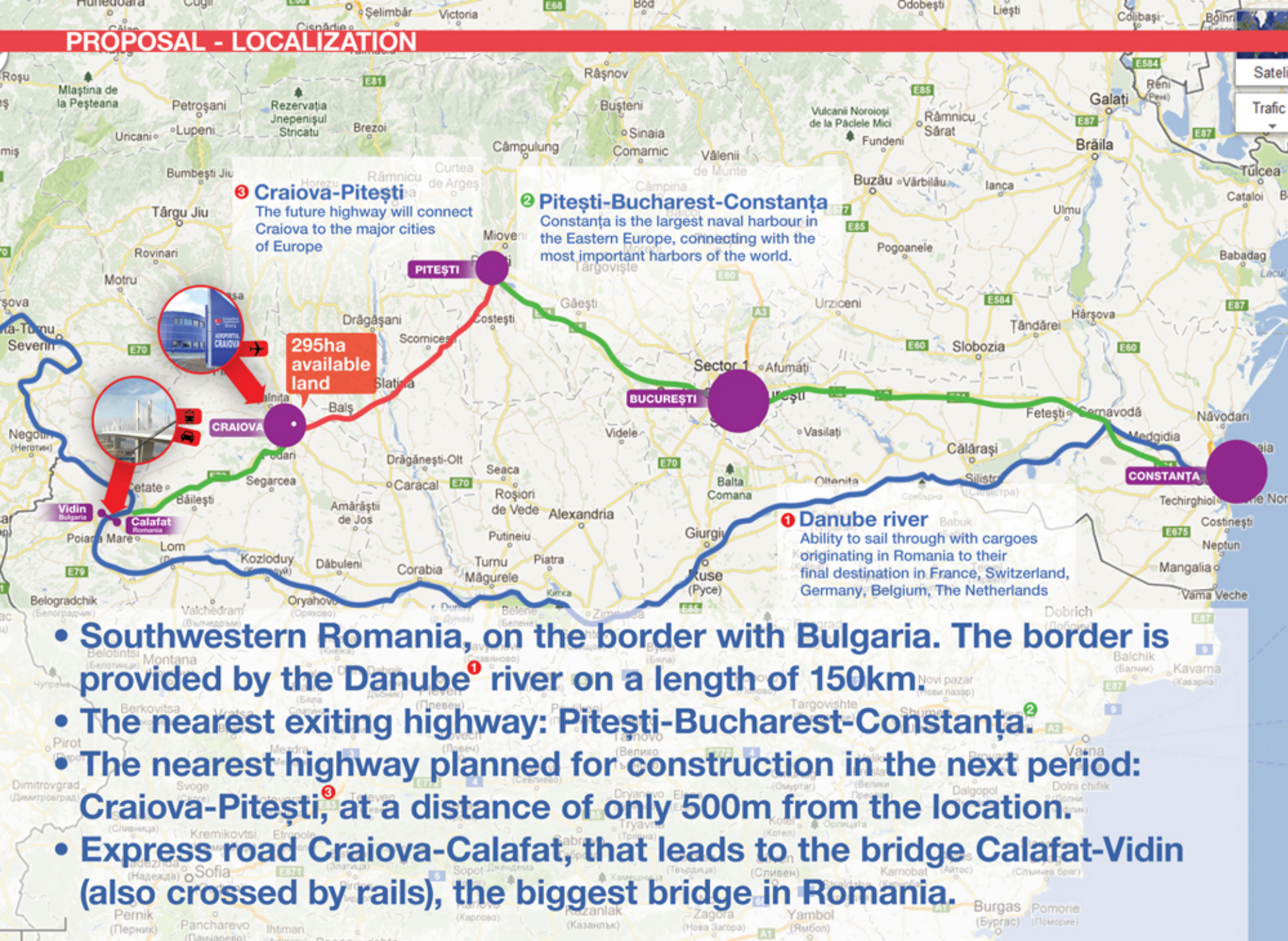
Craiova, the capital of Oltenia Region



Oltenia Region, with an area of 29,212 km², is situated in the South West part of Romania, comprises five counties: Dolj, Gorj, Mehedinți, Olt, Valcea. The Danube follows the border with Bulgaria and Serbia over a distance of 417 km.

The most important cities are Craiova, Ramnicu-Valcea, Turnu Severin, Targu-Jiu and Slatina. On 1 January 2012, the total population was 1,446,319 inhabitants, the weight of urban population being 53.16% and 46.84% rural.

PROPOSAL - LOCALIZATION



- Southwestern Romania, on the border with Bulgaria. The border is provided by the Danube¹ river on a length of 150km.
- The nearest exiting highway: Pitești-Bucharest-Constanța.²
- The nearest highway planned for construction in the next period: Craiova-Pitești,³ at a distance of only 500m from the location.
- Express road Craiova-Calafat, that leads to the bridge Calafat-Vidin (also crossed by rails), the biggest bridge in Romania.

Companies in Dolj County

- Number of active companies (juridical personalities): 21,692
- Number of companies, analyzed for the Top of companies: 2,218
- Number of companies awarded: 142
- Number of fields of activity: 6
 - Research and Development; High - Tech;
 - Industry;
 - Agriculture, Horticulture, Silviculture, Fishing;
 - Constructions;
 - Services;
 - Commerce and Tourism.

More informations: <http://www.ipacv.ro/dorothy/>



CRAIOVA MAP

The future Oltenia Business Center

220ha

City Center of Craiova

- Population: 243.765 citizens
- Area: 81.41 km²
- Metropolitan area: 419.2 km²

Industrial Park

Craiova Airport

Pitești City

Available land

75ha

120km

E70

10km

10km

100m

E574

E574

Available land

Surface: 220 ha

Electricity: 40kV/40MVA

Water: 40.000 m³/month

Gas: 10.000 mmBTU

Public transportation: by bus, by tram

Railway: 25 km of internal railway connected to the national railway network

Ports at the Danube: Bechet, Calafat, situated close to the location

Sewage system: operating the river water treatment and waste water treatment Plant

Available land

Surface: 75 ha

Electricity: 20kV/20MVA

Water: 40.000 m³/month

Gas: 10.000 mmBTU

Public transportation: by bus

Railway: existing on the premises, connected to the national railway network

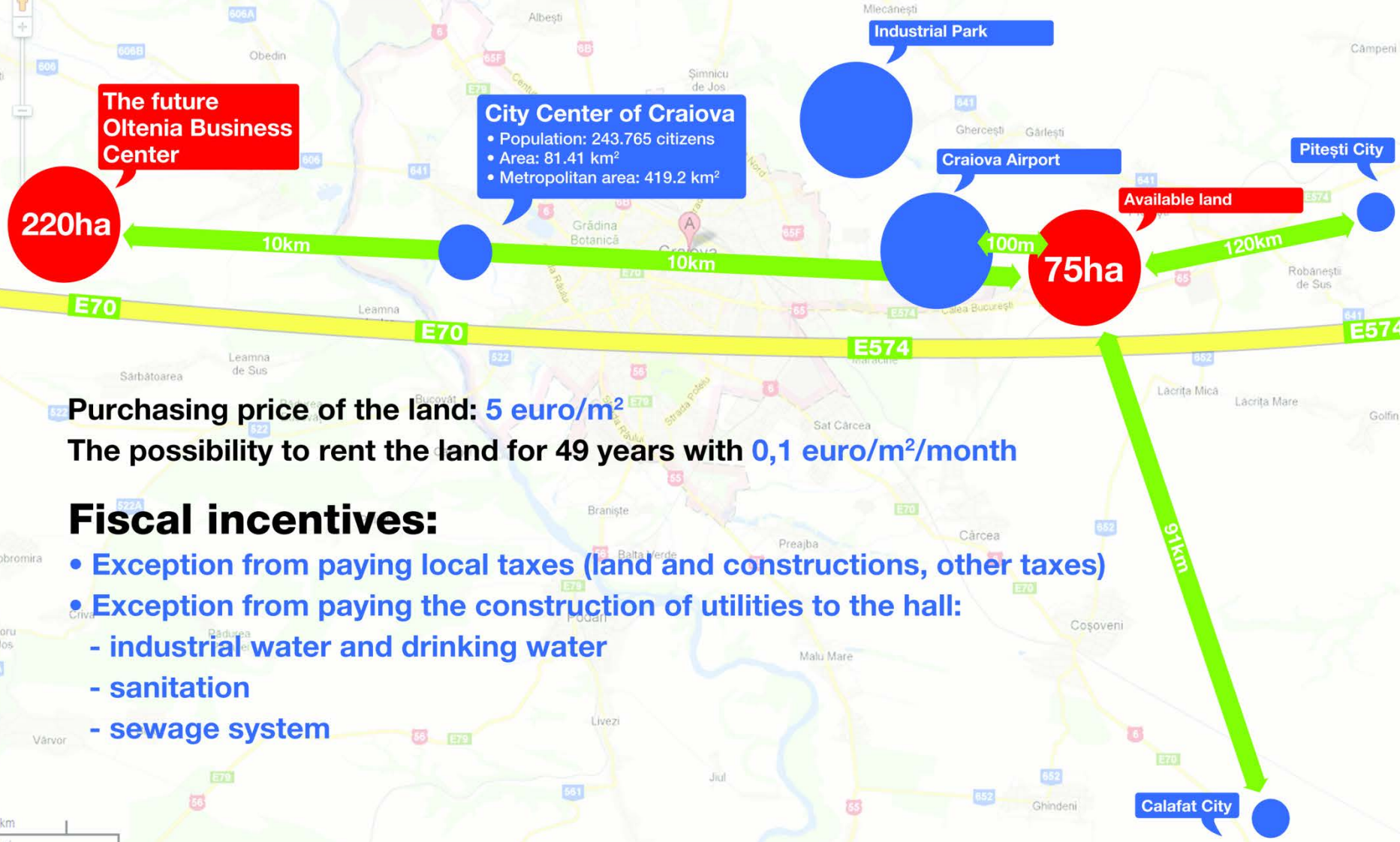
Sewage system: 50.000 m³/month
The sewage system is connected to the City's network, being provided with a waste water treatment plant

91km

Calafat City



CRAIOVA MAP



The future Oltenia Business Center

City Center of Craiova

- Population: 243.765 citizens
- Area: 81.41 km²
- Metropolitan area: 419.2 km²

Industrial Park

Craiova Airport

Pitești City

Available land

220ha

10km

10km

100m

75ha

120km

91km

Calafat City

Purchasing price of the land: 5 euro/m²

The possibility to rent the land for 49 years with 0,1 euro/m²/month

Fiscal incentives:

- Exception from paying local taxes (land and constructions, other taxes)
- Exception from paying the construction of utilities to the hall:
 - industrial water and drinking water
 - sanitation
 - sewage system

AEROPORTUL CRAIOVA

Craiova International Airport

- situated at a distance of only 100m from the location
- airline flights to Milano, Rome, Dortmund, Barcelona, Bologna, London
- flights in perspective: Istanbul



Labor advantages:

- labor cost is one of the lowest in Romania, 20% cheaper than Cluj or Timișoara
- over 2.000 people were offered professional training in European Union, due to Ford Motor Company which manufactures automobiles and motors in Craiova

Education:

- 4 Universities (2 public universities, 2 private universities), with specialized departments in automation, engineering, and computer programming, teaching also in English language
- public high-schools: 45 in the county and 23 in Craiova
- public technological high-schools: 14
- international school - at a distance of less than 9km from location

Other factories from the industrial platform:



Automobiles



Tractors



Locomotives

Heavy
Equipment
Factory



Plane
Factory



Kirchhoff Automotive, one of the world's largest manufacturers of automotive systems and enclosures opened in 2012 its first factory in Craiova
ETI Turkish sweets factory will soon be launched in Craiova Industrial Park

Other relevant industries

- Software – ITC and embedded systems.
- Energy (Termo / Hydro / solar).
- Pharmacy.
- Constructions; Materials for constructions.
- Power electronics; Trams modernization (electronics parts).
- Agriculture, Horticulture, Wine.
- Equipments for agriculture.
- Chemical.
- Clothes.
- Research and Innovation; High-Tech.

Exhibiting in Craiova

Hampshire Chamber with BRIDGE have arranged with the City of Craiova a facility for UK businesses to exhibit products, services or even to open additional offices in a new purpose built exhibition complex in Craiova.

Any company that wants to explore potential sales or partnerships can take a space or office at a very low cost giving access to direct interaction with potential customers.

How does it work?

You bring your physical product or promotional stand/materials for your services and select and arrange the appropriate space and display. You will stay two or three days and train a student from the University of Craiova, with which we have a partnership. He/she will not only continue to manage exhibiting and explaining your products/services, but will also try to attract and interact with potential customers and send you periodical reports and continually interface between you and your customers throughout the period you are exhibiting, such that you never lose control. There will be no time or space limit for you to keep this going and maximise your sales.

The costs are minimal, between 200 and 500 GBP per month, dependent on the nature and complexity of your products/services and the amount of space you require, including the activity of your chosen student. The only additional costs are those with transporting your products from Britain to Romania and return. There are weekly direct flights from Luton to Craiova (3 hours length of flight) plenty of designated hotels with which we have negotiated a very good rate and our local Craiova office will arrange transfers and any necessary assistance.

Why Craiova?

Your potential market consists of over 100 local authorities and 14, 000 companies active in all aspects of industry, aerospace, defence, heavy industry, manufacturing, agriculture, mining, electricity, gas, steam air conditioning, water, construction, wholesale and retail, repair of motor vehicles and motorcycles, transport and storage, 561 Hotels and restaurants, information and communication, professional, scientific and technical activities, support



Advantages of doing business in Craiova

- Romania has access to billions of Euro to be invested in the regions from the EU funds
- Availability of public authorities to develop public-private partnerships and to support the business environment
- The existence of free production capacities which can be revamped
- The existence of qualified personnel, adaptable to new technologies
- The diversity of the industrial branches
- The existence of a diversified sector of small and medium enterprises willing to engage in partnerships
- Large multinational companies such as Ford or Honeywell which will bring along other investments and the setting up of a supply chain factories
- An investment market as yet unsaturated
- Business support infrastructure available
- Highly skilled workers at competitive rates

Oltenia Business Center

Facilities provided by Doljchim platform

The future
Oltenia Business
Center

220ha

10km

City Center of Craiova

- Population: 243.765 citizens
- Area: 81.41 km²
- Metropolitan area: 419.2 km²

- Platform at the European Road E70
- 220ha area
- The existence of an authorized functional railroad bordering the national network (total internal network-25km)
- Drinking and industrial water;
- Operating the river water treatment Plant;
- Operating the wastewater treatment Plant;
- Existence, on the entire platform, of an internal and external (87 overground of high pressure, 132 underground of low pressure) hydrant network
- The existence of sewerage network of aprox 18 km, on the entire area of the platform consisting of:
 - Drinking water sewage;
 - Industrial water sewage
- Gas paths on the entire platform;
- Nitrogen paths
- Parking for 2000 vehicles in front of the main access gate on Doljchim platform

So far achievements

- Building and operating, in December 2012, the OMV Petrom Isalnița Warehouse
- realizing development projects - Building Doljchim photovoltaic power plant (PV Plant)
- realizing investigations for alternative use of the location

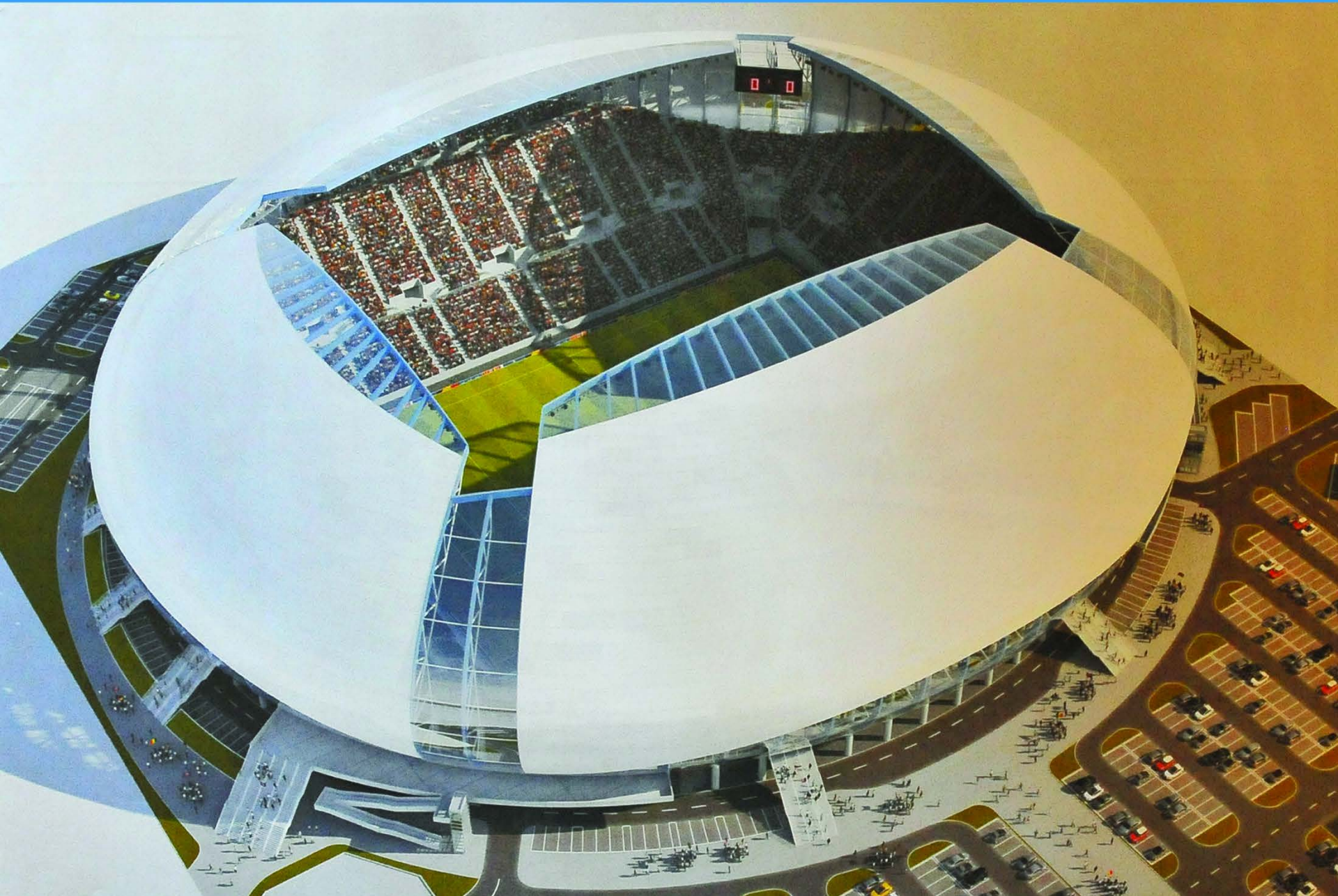
The lowest price for cargo transport is by fluvial way



Companies like Euro Bevrachting Group operate the fluvial waters of Europe in services like river transports from North to Black Sea

- excellent connection in all river port through own agents network
- long-terms projects oriented management ready to invest together with its partners for developing new cargo routes
- deep understanding of an emerging market, with readiness to grant competitive tariffs helping develop projects and growing together with them
- large variety of cargo transported: containers - box-shaped cargo holds allowing transportation of 20'' or 40'' containers
- ability to sail through with cargoes originating in Romania to their final destination in France, Switzerland, Germany, Belgium, The Netherlands using the Rhine Main Danube Canal

MAIN INVESTMENT PROJECT IN 2015: THE NEW „ION OBLEMENCO“ STADIUM



Investment

Ișalnița, Dolj County

Public-private partnership – external partner – for **an industrial park**

- Ișalnița has a 8 hectars site with all the necessary utilities – the site where it was the industrial platform of Doljchim SA available for the investment (the industrial park).

Contact person: BADEA IULIA – City Hall’s Secretary, Phone -
0730782155

Vârvoru de Jos Village, Dolj County

Public-private partnership –partner – for a multifunctional center

- Vârvoru de Jos Village, Dolj County has a site (approx 200 hectars) near a lake available for the investment.
- The multifunctional center will offer:
- Offices; Spaces for educative activities; Accomodation; Village museum;
- Outdoor spaces for sports (including paths for cyclists), entertainment, cultural activities

Public-private partnership –partner – for a zootechnical complex

- Ecoiluizia Agricole Cooperative, a private person has a site in the village, (approx. 10 hectars arable land) available for the investment.
- The zootechnical complex will have:
- livestock farming (romanian breed pigs – Mangaliță breed);
- processing

Contact person: Tabacu Nicu – Mayor, Phone - 0744594321

Bailesti city, Dolj County

Factory for parts and subassemblies for the automotive industry by modernizing factory and equipments former “Electric cells”, which is in bankruptcy;

Complex vegetable for preserving and delivering vegetables to supermarkets, from village area - produced results - products brook;

Processing plant for meat and vegetables - sausage,

The qualified personnel to support new factories mentioned, at Local School, vocational / dual qualification in the necessary fields.

Contact person: Pistritu Costel, Mayor, tel +40 251 311956; +40 727 226724

SME Producer space, near Industrial Park

With a land area of 10,000 square meters located near of the Industrial Park and ETI's Confectionery Factory also next to the E-Twow factory.

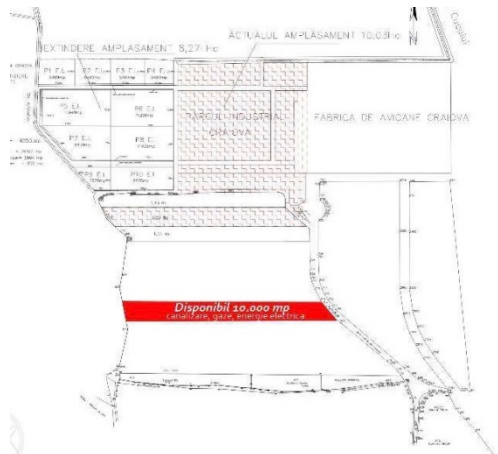
The land has double opening and benefits of all the units needed. Ideal for a production hall, storage rooms, show-room.

Classification: industrial land. Property: private.

Contact person: Gilbert Vasile

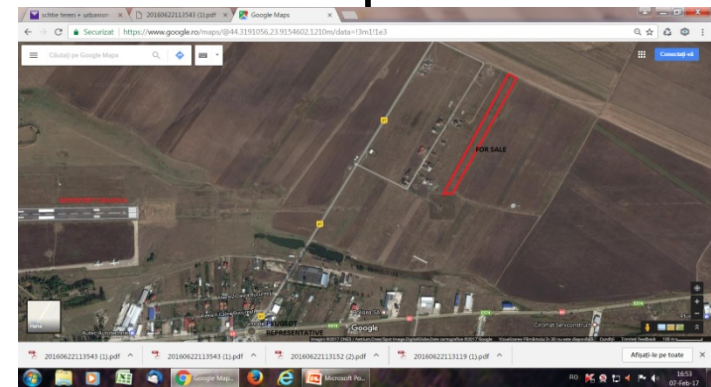
Phone: 0726616949,

Email: gilbertvasile@gmail.com



Intravilan land for construction in the village of Pielesti - the metropolitan area

- Set in the village of Pielesti - the metropolitan area of Craiova, in a residential area of houses
- Near Craiova Airport
- The area has electricity
- At a distance of 700 meters from the paved road
- At a distance of approx. 1500 m from the European road 574
- The width of field is 27 m and the length of field is about 530 m, with the possibility of being divided into several plots.
- Price is € 15 / sqm accord to market.
- Contact: Ghionea Razvan,
dlr_555@yahoo.com





Craiova

Doing business with friendship and long term partnerships

